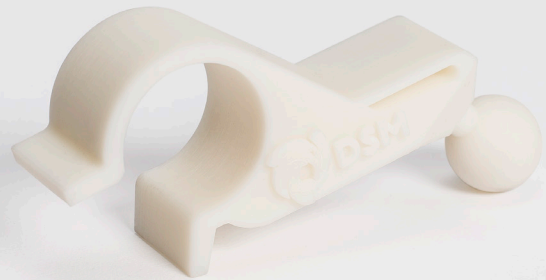
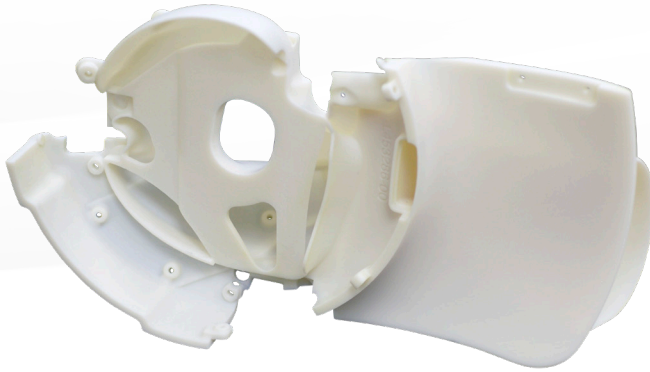


PerFORM

Technology: **SLA**

COLOR OPTIONS: Off-White



APPLICATIONS:

Tooling, wind tunnel testing, automotive housings.

DESCRIPTION:

SLA materials mimic a wide array of engineering plastics, elastomers and composites. With the lowest viscosity of any composite stereolithography material, parts made from PerFORM are faster to build and easier to post-process and clean.

FEATURES:

Strong, stiff, excellent detail resolution.
High heat tolerance.

TECHNICAL DATA

PROPERTY	ASTM	METRIC UNITS
Tensile Strength	D638M	80 MPa
Modulus of Elasticity, Youngs Modulus	D638M	9,800 MPa
Elongation Break (%)	D638M	1 %
Flexural Strength	D790M	146 MPa
Flexural Modulus	D790M	9,030 MPa
IZOD Impact Strength (notched)	D256A	20 J/m
Heat Deflection Temperature @ 0.45 MPa/66 psi, (°C)	D648	268 °C