

# Crafting Class A Show Models

At Dinsmore, every detail matters. Our team of seasoned engineers meticulously craft each model with precision, ensuring that every contour, curve, and surface finish meets the exacting standards of Class A quality.

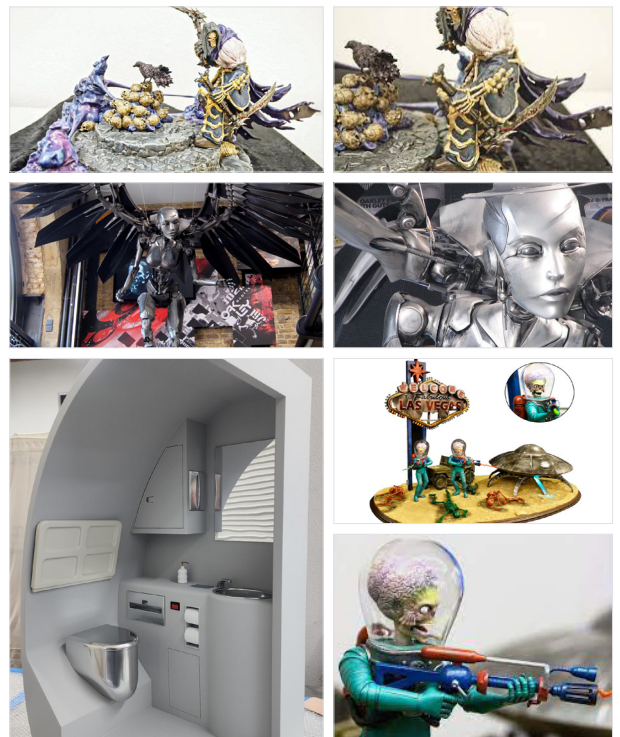
**Advanced Materials:** We utilize an array of high-performance polymers specially selected for their superior aesthetic properties and durability.

**State-of-the-Art Technology:** Equipped with the latest advancements in polymer 3D printing technology, Dinsmore pushes the boundaries of what's possible. Our state-of-the-art machinery delivers unrivaled resolution and detail, enabling us to bring your vision to life with stunning clarity.

**Custom Solutions:** No two projects are alike, and neither are our solutions. Whether you require a single prototype or a full-scale production run, our team works closely with you to understand your unique requirements and deliver tailored solutions that exceed expectations.

## WOW FACTOR:

A Class A Show Model isn't just a prototype—it's a statement. These models replicate products with lifelike accuracy, featuring flawless finishes, precise dimensions, and realistic textures. They serve as powerful marketing tools, allowing stakeholders to visualize and evaluate product concepts with unparalleled clarity and sophistication.



## THE FULL SOLUTION OFFERING:



Metal Additive



Polymer 3D Printing



Injection Molding



CNC Machining



Engineering Services



Quick-Turn Parts



Full Assembly

## CAPABILITIES

Ambition has no limit, either in scope or reach. ADDMAN provides manufacturing solutions across infinite horizons through innovation and engineering expertise. Complete lists available upon request.

### Metal Additive

- 3D Systems ProX DMP 320
- Additive Industries MetalFAB1
- EOS M400-1, M400-4, M290, M270, M100
- GE Additive Concept Laser M2
- Nikon SLM Solutions 280, NXG
- VELO 3D Sapphire, Sapphire XC

### Injection Molding

- Arburg 370 Golden Electric 66-ton
- Arburg Allrounder 630 A 280-ton
- Fanuc Roboshot S-2000i 55-ton
- Fanuc Roboshot S-2000i 100B 110-ton
- Fanuc Roboshot S-2000i 150B 165-ton
- Fanuc Roboshot a-S330iA 358-ton
- Sumitomo Electric SE100D 100-ton
- Sumitomo SE500EV-A-HD 562-ton

### Post-Processing

- Anodizing: Titanium | Teflon | Hard Chrome Sulfuric Acid
- Powder Coatings
- Plating: Zinc | Chromium | Nickel Copper | Gold
- Dry Film
- Black Oxide
- Passivation: Nitric Acid | Citric Acid
- Shot Peening
- Heat Treating
- Penetrant Inspection
- Non-Destructive Testing
- Pickle and Oiling
- Lubricants
- Polishing | Electropolishing
- Masking | Brushed Masking
- Annealing | Isothermal | Stress Relief
- Primer / Paint Application
- Chemfilm / Chromate Conversion
- Bead Blasting

### 3D Polymer Printing

- 3D Systems Prox 320, Prox 800
- 3D Systems SLA-5000, SLA-7000
- 3D Systems Viper
- Aextra Lumia X1
- Carbon 3D L1, M2, M3
- Formlabs 3BL, Form 2, 3, 3L, Fuse 1
- Fusion3 F410
- HP 4200, 5210, 5420
- Markforged Mark 2
- Nexa 3D XiP
- Roboze Argo 500
- Stratasys 360, 400, F370, NEO 800, 400 MC, 450 MC
- Titan Atlas 2.5

### CNC Machining

- (93x) 3-7 Axis Vertical CNC Machines
- (24x) 3-5 Axis Horizontal CNC Machines
- (14x) Turning/Milling Centers
- (22x) CNC Lathes
- (15x) CMM Centers
- (10x) Drill EDM
- (1x) EDM Press
- Friction Stir Welding

## MATERIALS

We have over 30 years of experience in material and parameter science. Understanding and isolating process variables allow us to show improved strength, density, and fatigue resistance. Complete lists available upon request.

### 3D Printing Metals

#### Core Capabilities

- Aluminum Alloys\*
- Nickel Alloys\*
- Niobium C103
- Steel Alloys\*
- Titanium Alloys\*

#### Available Upon Request

- Cobalt Chrome
- Copper Alloys\*
- Rhenium
- Tantalum

### 3D Printing Polymers

- Carbon Matrix Composite
- Polymer Matrix Composite
- HexPeKK
- ABS & ABS-Carbon Fiber
- Ceramic Resin
- Elastic 50A
- ESD Resin
- Flexible 80A
- Nylon 11,12
- PC-Glass Filled
- Polycarbonate
- Polypropylene
- Rigid 10K, 4000
- TPU

### CNC Metals

- Aluminum
- Brass
- Copper
- Graphite
- Hastelloy
- Invar
- Kovar
- Molybdenum
- Inconel
- Stainless Steel
- Titanium
- Tungsten

### Thermoplastics

- ABS
- Nylon
- Polycarbonate
- TPU
- Bioresins
- Isoplast™
- Filled: carbon, glass, metal
- EcoMass™
- PEEK
- Radel™
- Stanyl™
- Ultem™
- Thermally-conductive, Electric and dielectric

